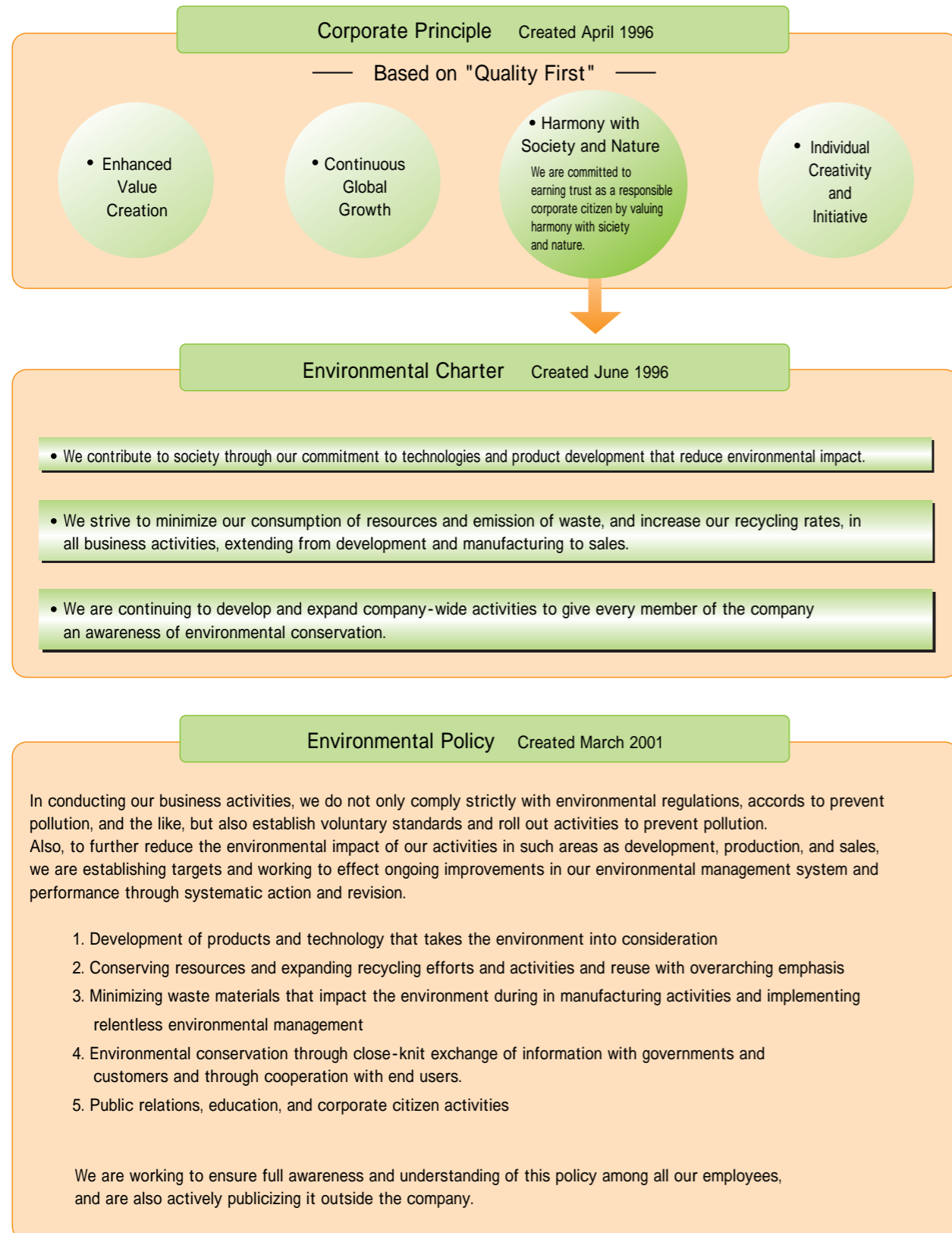




# Environmental Management

## Environmental Policy

Aisin established the "Aisin Seiki Environmental Charter" and the "Aisin Seiki Environmental Policy" based on the corporate principles that were established in 1996. These have allowed us to begin to meet the challenge of beginning company-wide environmental conservation activities that contribute to creating a sustainable model of society.



## Environmental Awareness

Aisin uses a wide variety of materials and energy sources in its manufacturing of automotive parts, life & energy related products such as beds, shower-toilet seats and gas engine driven heart-pump air conditioners(GHP). At the same time, every stage, from the design and manufacture of products, to their eventual dismantling and disposal, has an impact on the environment.

For this reason, activities that lessen the environmental impact of our products, which are implemented through environmental management, not only seeking to offer sustainability, but also expressing our commitment to global environmental conservation and the achievement of a sustainable social model. All our environmental conservation activities are planned and implemented with this in mind.

