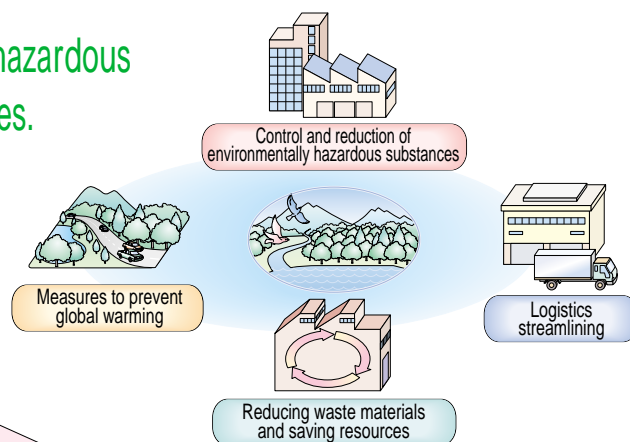


### 【 Basic Approach 】

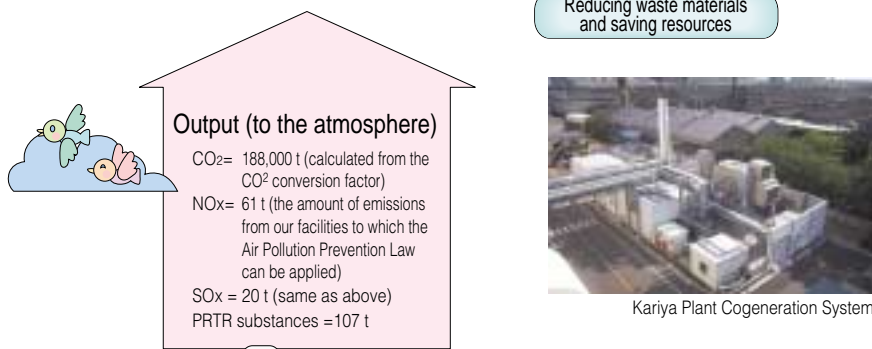
Aisin is committed to reducing environmentally hazardous substances throughout the development processes.

Our basic approach to production is represented by our commitment to reduce environmentally hazardous substances throughout the cycle from material purchasing to production and distribution, based on our Third Environmental Action Plan.



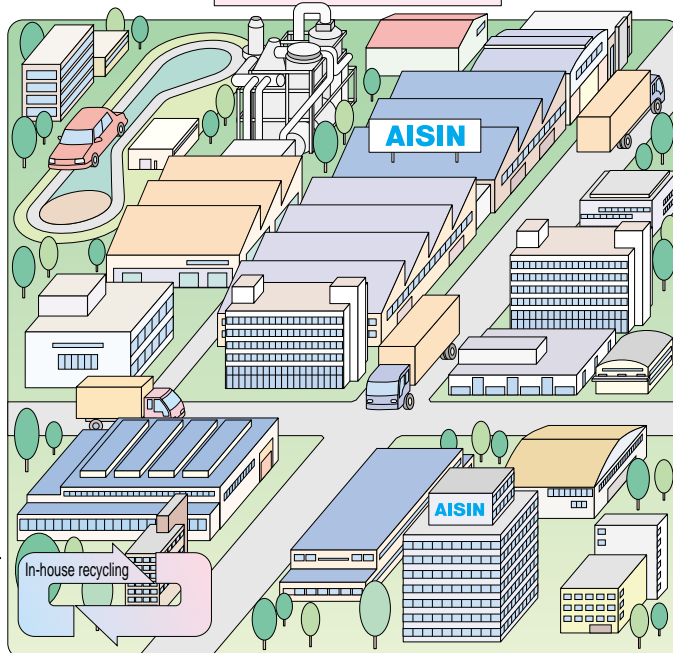
#### Overview of environmental hazards

We manufacture a wide range of automotive parts and life and amenity-related products. Through typical manufacturing activities of the many parts and products, fossil fuels, industrial water, and chemicals are consumed, and environmentally hazardous substances can be released into the atmosphere and water. However, we focus our efforts on reducing environmentally hazardous substances by establishing and following our own stringent standard—the Aisin Environmental Standard.

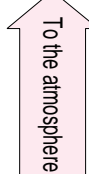


**Input**  
 Energy  
 Electricity = 243,146 MWh  
 Heavy oil = 4,030 k  
 LNG = 46,171,000 m<sup>3</sup>  
 LPG = 203 t  
 Steam = 4,907 t  
 Water consumption  
 Industrial water = 2,140,000 t  
 Well water = 1,007,000 t  
 Clean water = 213,000 t  
 PRTR substances = 892 t

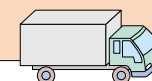
Parts and raw materials



**Output (to the atmosphere)**  
 CO<sub>2</sub> = 12,300 t



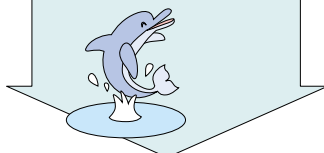
**Transport of products**  
 (packing materials: 5,018 t)



Handa Plant Wastewater Treatment Facility

#### Output (to waters)

The amount of discharge = 3,171,000 t  
 PRTR substances = 3 t



#### Emissions

Recycling by contractors

#### Waste materials

Incineration materials = 124 t  
 Landfill = 3 t